

vtech[®]

User's Manual

Learn & Dance Interactive Zoo™



© 2008 VTech

Printed in China

91-002292-005-000 (美)

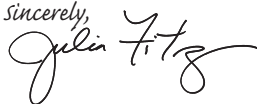
Dear Parent,

Ever notice the look on your baby's face when they learn something new through their own discovery? These self-accomplished moments are a parent's greatest reward. To help fulfill them, **VTech**[®] created the **Infant Learning**[®] series of toys.

These unique interactive learning toys directly respond to what children do naturally – play! Using innovative technology, these toys react to baby's interactions, making each play experience fun and unique as they learn age-appropriate concepts like first words, numbers, shapes, colors and music. More importantly, **VTech**[®]'s **Infant Learning**[®] toys develop baby's mental and physical abilities by inspiring, engaging and teaching.

At **VTech**[®], we know that a child has the ability to do great things. That's why all of our electronic learning products are uniquely designed to develop a child's mind and allow them to learn to the best of their ability. We thank you for trusting **VTech**[®] with the important job of helping your child learn and grow!

Sincerely,



Julia Fitzgerald
Vice President, Marketing
Vtech Electronics, NA

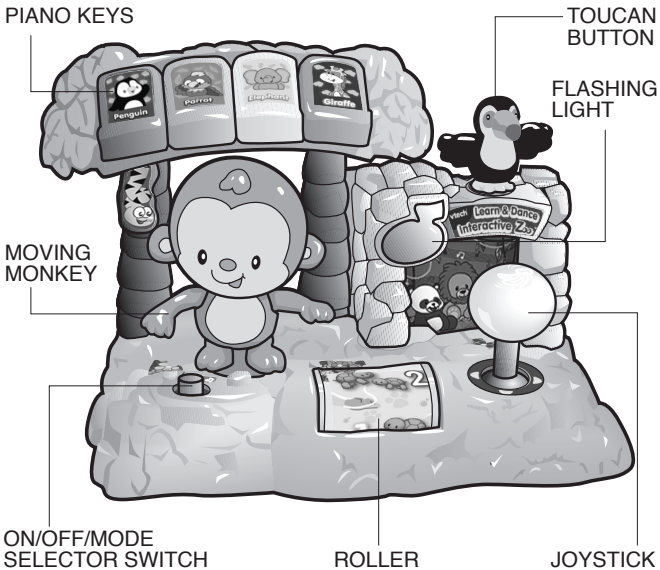
To learn more about the **Infant Learning**[®] and other **VTech**[®] toys, visit www.vtechkids.com

INTRODUCTION

Thank you for purchasing the **VTech® Learn & Dance Interactive Zoo™** learning toy.

The **VTech® Learn & Dance Interactive Zoo™** is an interactive playset for toddlers. Four brightly colored piano keys introduce colors and familiar zoo animals through cute songs and sounds. The animated monkey character swings his arms up and down and twists side to side when the joystick is moved. You'll also meet a friendly toucan and some slow moving turtles. Listen to the music and get on your feet. Move like the animals, stomp your feet!

PIANO KEYS



INCLUDED IN THIS PACKAGE

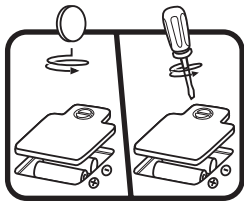
- One VTech® Learn & Dance Interactive Zoo™ learning toy
- One instruction manual

WARNING: All packing materials, such as tape, plastic sheets, wire ties and tags are not part of this toy, and should be discarded for your child's safety.

GETTING STARTED

BATTERY INSTALLATION

1. Make sure the unit is turned **OFF**.
2. Locate the battery cover on the bottom of the unit. Use a coin or a screwdriver to loosen the screw.
3. Install 2 new “AA” (AM-3/LR6) batteries following the diagram inside the battery box. (The use of new alkaline batteries is recommended for maximum performance.)
4. Replace the battery cover and tighten the screw to secure the battery cover.



BATTERY NOTICE

- Install batteries correctly observing the polarity (+, -) signs to avoid leakage.
- Do not mix old and new batteries.
- Do not mix batteries of different types: alkaline, standard (carbon-zinc) or rechargeable (nickel-cadmium).

- Remove the batteries from the equipment when the unit will not be used for an extended period of time.
- Always remove exhausted batteries from the equipment.
- Do not dispose of batteries in fire.
- Do not attempt to recharge ordinary batteries.
- The supply terminals are not to be short-circuited.
- Only batteries of the same and equivalent type as recommended are to be used.

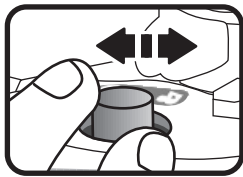
WE DO NOT RECOMMEND THE USE OF RECHARGEABLE BATTERIES.

PRODUCT FEATURES

1. ON/OFF/MODE SELECTOR SWITCH

To turn the unit **ON**, slide the **ON/OFF/MODE SELECTOR SWITCH** to the **LEARNING MODE** (🎓) or the **MUSIC MODE** (🎵) position.

To turn the unit **OFF**, slide the **ON/OFF/MODE SELECTOR SWITCH** to the **OFF** (•) position.

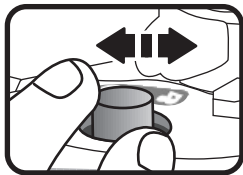


2. AUTOMATIC SHUT-OFF

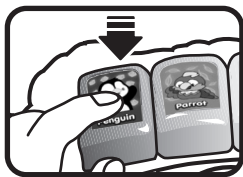
To preserve battery life, the **VTech® Learn & Dance Interactive Zoo™** will automatically power-down after approximately 30 seconds without input. The unit can be turned on again by pressing any button.

ACTIVITIES

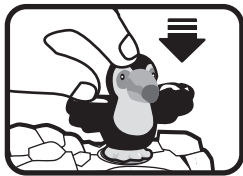
1. Slide the **on/off/mode selector switch** to turn the unit on. You will hear a song and a welcoming phrase. The light will flash with the sound.



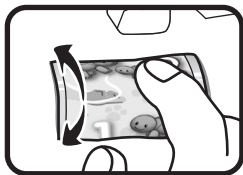
2. Press the **piano keys** in the learning mode to hear the button color introduced or playful animal songs and sounds. In the music mode you will hear animal sounds and melodies. The light will flash with the sound.



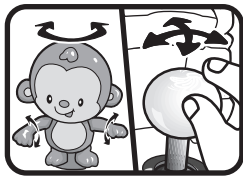
3. Press the **toucan button** to hear fun phrases and bird sounds. The light will flash with the sound.



4. Spin the **roller** to hear fun phrases and sounds. When the melodies are playing, spin the roller quickly to increase the tempo of the melodies or spin the roller slowly to decrease the tempo of the melodies. The light will flash with the sound.



5. Move the **joystick** to move the monkey and hear a variety of phrases, sounds, songs and short tunes, depending on the selected mode. The light will flash with the sound.



MELODY LIST

1. Animal Fair
2. Froggy Went a Courtin'
3. Big Rock Candy Mountain
4. This Old Man
5. Daring Young Man on the Flying Trapeze
6. Lavender's Blue
7. The Entertainer
8. Yankee Doodle

SUNG SONG LYRICS

SONG 1:

Listen to the music and get on your feet.

Move like the animals, stomp your feet!

Waddle like a penguin, stretch up tall like the giraffe.

Dance like the monkey and laugh, laugh, laugh!

SONG 2:

I'm a tiny little penguin,

Waddling here, waddling there.

SONG 3:

I'm a very friendly parrot,
Chatting out loud for all to hear.

SONG 4:

I'm a great big elephant,
Stomping here, stomping there.

SONG 5:

I'm a big and tall giraffe,
Standing so high I'm touching the sky

CARE & MAINTENANCE

1. Keep the unit clean by wiping it with a slightly damp cloth.
2. Keep the unit out of direct sunlight and away from any direct heat source.
3. Remove the batteries when the unit will not be in use for an extended period of time.
4. Do not drop the unit on hard surfaces and do not expose the unit to moisture or water.

TROUBLESHOOTING

If for some reason the program/activity stops working, please follow these steps:

1. Please turn the unit **OFF**.
2. Interrupt the power supply by removing the batteries.

3. Let the unit stand for a few minutes, then replace the batteries.
4. Turn the unit **ON**. The unit should now be ready to play again.
5. If the product still does not work, replace with a new set of batteries.

If the problem persists, please call our Consumer Services Department at 1-800-521-2010 in the U.S. or 1-877-352-8697 in Canada, and a service representative will be happy to help you.

For information on this product's warranty, please call **VTech**® 1-800-521-2010 in the U.S. or 1-877-352-8697 in Canada.

IMPORTANT NOTE:

Creating and developing **Infant Learning** products is accompanied by a responsibility that we at **VTech**® take very seriously. We make every effort to ensure the accuracy of the information, which forms the value of our products. However, errors sometimes can occur. It is important for you to know that we stand behind our products and encourage you to call our **Consumer Services Department** at 1-800-521-2010 in the U.S. or 1-877-352-8697 in Canada, **with** any problems and/or suggestions that you might have. A service representative will be happy to help you.

Note:

This equipment has been tested and found to comply with the limits for a Class B digital device, pursuant to Part 15 of the FCC Rules. These limits are designed to provide reasonable protection against harmful interference in a residential installation. This equipment generates, uses and can radiate radio frequency energy and, if not installed and used in accordance with the instructions, may cause harmful interference to radio communications. However, there is no guarantee that interference will not occur in a particular installation. If this equipment does cause harmful interference to radio or television

reception, which can be determined by turning the equipment off and on, the user is encouraged to try to correct the interference by one or more of the following measures:

- Reorient or relocate the receiving antenna
- Increase the separation between the equipment and receiver
- Connect the equipment into an outlet on a circuit different from that to which the receiver is connected
- Consult the dealer or an experienced radio/TV technician for help

Caution: changes or modifications not expressly approved by the party responsible for compliance could void the user's authority to operate the equipment.